

# SSC CGL (Tier - 1) Online Exam Paper - 2016 "held on 1 September 2016" Evening Shift (Reasoning)

**EXAM DATE :** 1-September-2016

**EXAM START TIME :** 16:15:00

**EXAM DURATION :** 01:15 Hrs

**Question 1.** Select the related word/letters/numbers from the given alternatives:

Book:Pages::Wall:?

**Options:**

- 1) SAND
- 2) CEMENT
- 3) BRICKS
- 4) STONES

**Correct Answer:** BRICKS

**Question 2.** Select the related word/letters/numbers from the given alternatives:

LNPQ : ACEF :: TUXY : ?

**Options:**

- 1) IMKL
- 2) IKMO
- 3) IKMN
- 4) PKLR

**Correct Answer:** IKMN

**Question 3.** Select the related word/letters/numbers from the given alternatives:

4:20::8: ?

**Options:**

- 1) 74
- 2) 70
- 3) 72
- 4) 78

**Correct Answer:** 72

**Question 4.** For the following questions

Find the odd word/letters/number from the given alternatives.

- (A) Bud
- (B) Branch
- (C) Leaf
- (D) Plant

**Options:**

- 1) A
- 2) B
- 3) C
- 4) D

**Correct Answer:** D

**Question 5.**For the following questions

Find the odd word/letters/number from the given alternatives.

- (A) ABD
- (B) FGI
- (C) LMO
- (D) STU

**Options:**

- 1) A
- 2) B
- 3) C
- 4) D

**Correct Answer:** D

**Question 6.**For the following questions

Find the odd word/letters/number pair from the given alternatives.

- (A) 24-42
- (B) 36-63
- (C) 37-73
- (D) 35-51

**Options:**

- 1) A
- 2) B
- 3) C
- 4) D

**Correct Answer:** D

**Question 7.**Arrange the following words as per order in the dictionary.

1. Manifest
2. Meticulous
3. Meridian
4. Merchant

**Options:**

- 1) 1,4,3,2
- 2) 2,1,4,3
- 3) 1,3,2,4
- 4) 2,3,4,1

**Correct Answer:** 1,4,3,2

**Question 8.** Which one set letters when sequentially placed at the gaps in the given letter series shall complete it?

M\_\_OMMN\_\_M\_\_NOMMN\_\_M

**Options:**

- 1) O N M O
- 2) N O M O
- 3) M O N M
- 4) N N M O

**Correct Answer:** N O M O

**Question 9.** Which number will complete the series?

14, 27, 52, 101, 198, ?

**Options:**

- 1) 381
- 2) 395
- 3) 391
- 4) 394

**Correct Answer:** 391

**Question 10.** M is son of P, Q is the grand-daughter of O, who is the husband of P. How is M related to O?

**Options:**

- 1) Son
- 2) Daughter
- 3) Mother
- 4) Father

**Correct Answer:** Son

**Question 11.**Ramesh is richer than Satish but Jaya is less rich than Ramesh. Ram is less rich than Jaya but richer than Satish, but is not as rich as Ramesh. Ramesh is less rich than Navin. The richest amongst them is?

**Options:**

- 1) Ramesh
- 2) Satish
- 3) Navin
- 4) Jaya

**Correct Answer:** Navin

**Question 12.**From the given alternative words, select the word which cannot be formed using the letters of the given word:

CARPENTER

**Options:**

- 1) NECTAR
- 2) CARPET
- 3) PAINTER
- 4) REPENT

**Correct Answer:** PAINTER

**Question 13.**If FRIEND is coded as HUMJTK, how can CANDLE be written in that code?

**Options:**

- 1) EDRIRL
- 2) ESJFME
- 3) DCQHQB
- 4) DEQJQM

**Correct Answer:** EDRIRL

**Question 14.**If A denotes  $-$ , C denotes  $\times$ , D denotes  $\div$ , E denotes  $+$ , then  $14C3A12E4D2 = ?$

**Options:**

- 1) 6
- 2) 17
- 3) 28
- 4) 32

**Correct Answer:** 32

**Question 15.**If  $879 = 8$ ,  
 $625 = 1$ ,

586 = 9,

then 785 = ?

**Options:**

1) 6

2) 7

3) 8

4) 9

**Correct Answer:** 6

**Question 16.** Find the missing number from the given alternatives:

8	7	6
7	6	5
6	5	4
90	65	?

**Options:**

1) 54

2) 44

3) 34

4) 26

**Correct Answer:** 44

**Question 17.** Sham goes to his friend's house that is straight 10 Km from his house. On his way back, he takes a right turn and walks 2 Km and again takes a right turn and walks for 10 Km before he takes a right turn again. How much distance is Sham still away from his house?

**Options:**

1) 10 Km

2) 8 Km

3) 12 Km

4) 2 Km

**Correct Answer:** 2 Km

**Question 18.** One or two statements are given followed by two conclusions, I and II. You have to consider the statement to be true, even if it seems to be at variance from commonly known

**facts. You are to decide which of the given conclusions/assumptions can definitely be drawn from the given statement. Indicate your answer.**

**Statement:** All boys are tall.

Rajiv is a boy.

**Conclusion I:** Rajiv is tall.

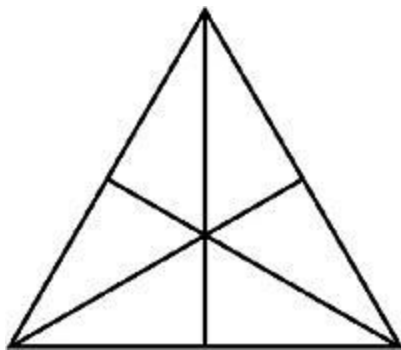
**II:** Rajiv is not tall.

**Options:**

- 1) Only conclusion I follows
- 2) Only conclusion II follows
- 3) Both conclusion I and conclusion II follow
- 4) Neither conclusion I nor conclusion II follows

**Correct Answer:** Only conclusion I follows

**Question 19.**How many triangles are there in the question figure?



**Options:**

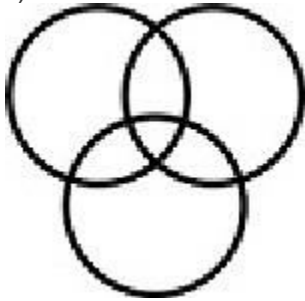
- 1) 6
- 2) 10
- 3) 12
- 4) 16

**Correct Answer:** 16

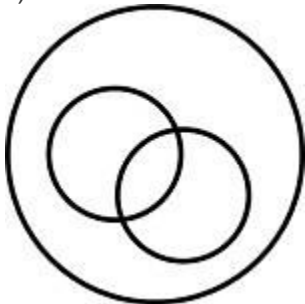
**Question 20.**Which of the following diagrams represent the relationship between Awards, Pulitzer Prize and Oscars?

Options:

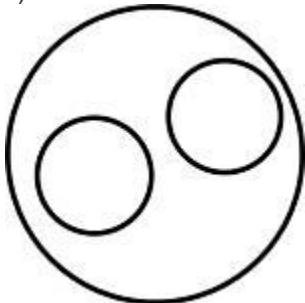
1)



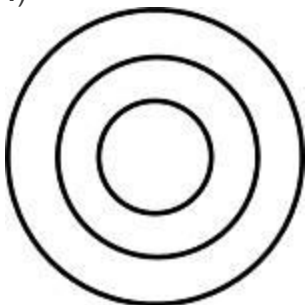
2)



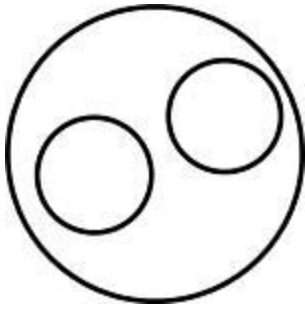
3)



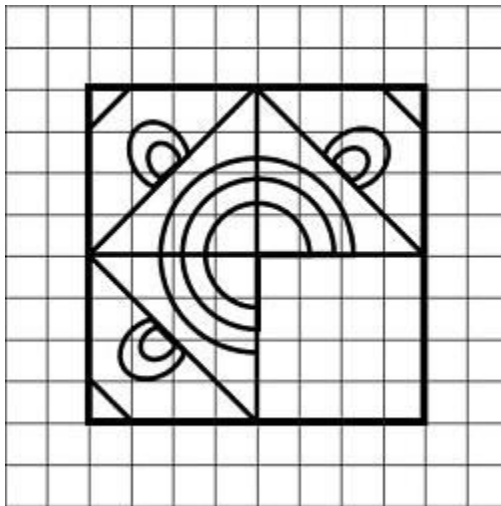
4)



Correct Answer:

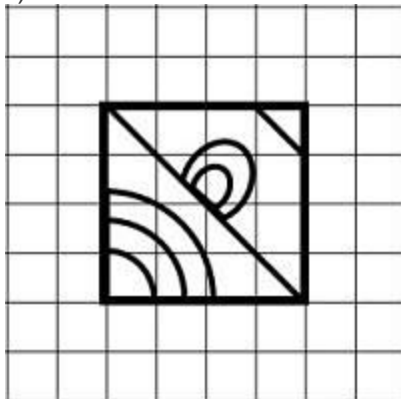


Question 21. Which answer figure will complete the pattern in the question figure?



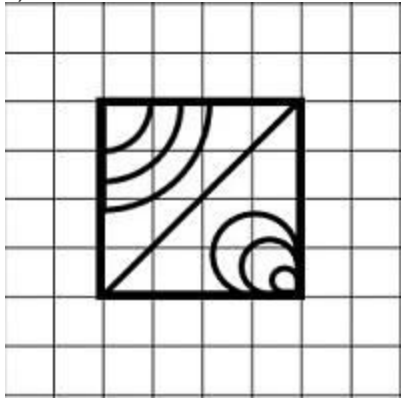
Options:

1)

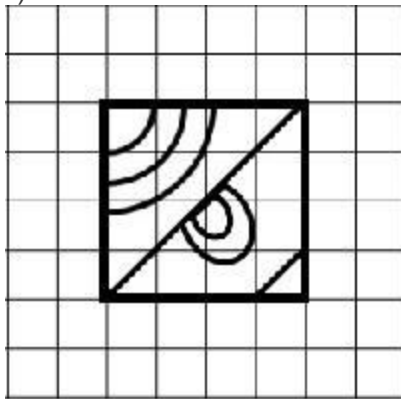




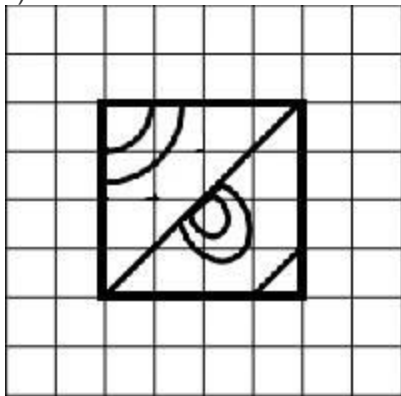
2)



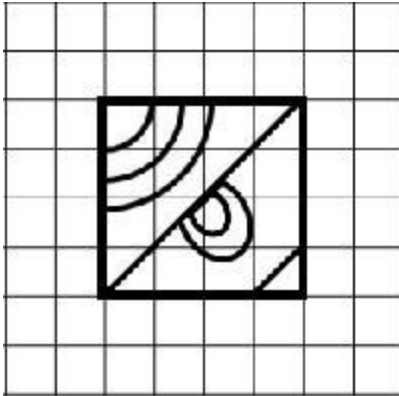
3)



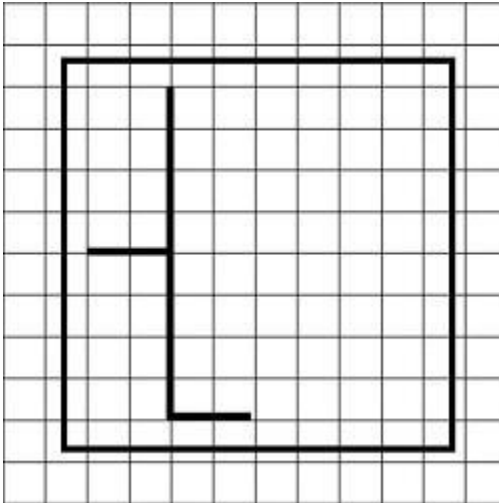
4)



\Correct Answer:

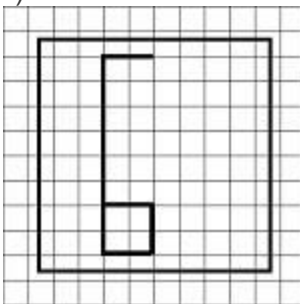


Question 22. From the given answer figures, select the one in which the question figure is hidden/embedded.

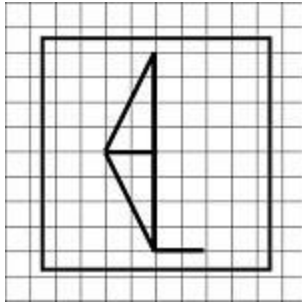


Options:

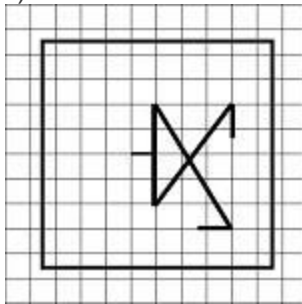
1)



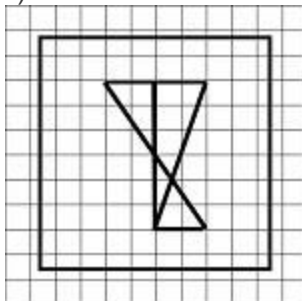
2)



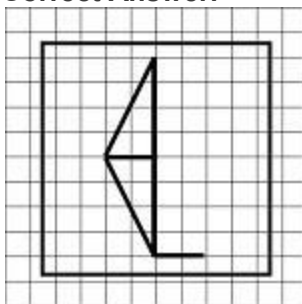
3)



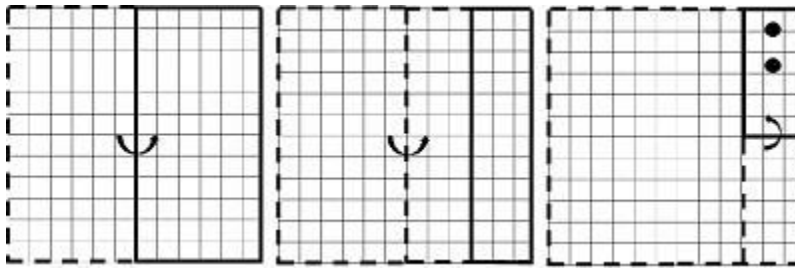
4)



Correct Answer:

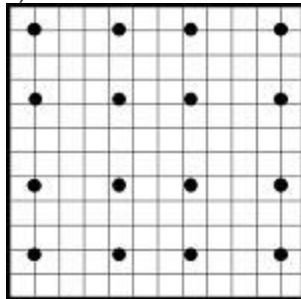


Question 23. A piece of paper is folded and cut as shown below in the question figures. From the given answer figures, indicate how it will appear when opened.

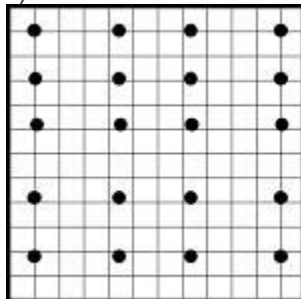


Options:

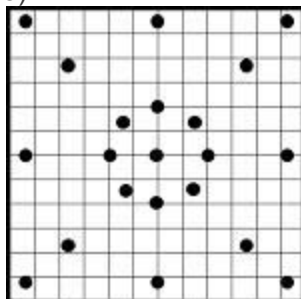
1)



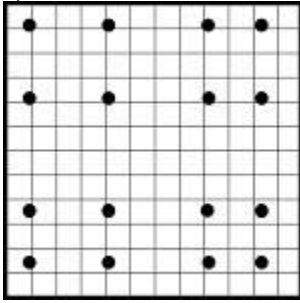
2)



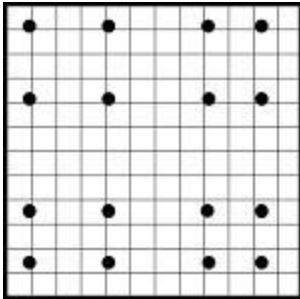
3)



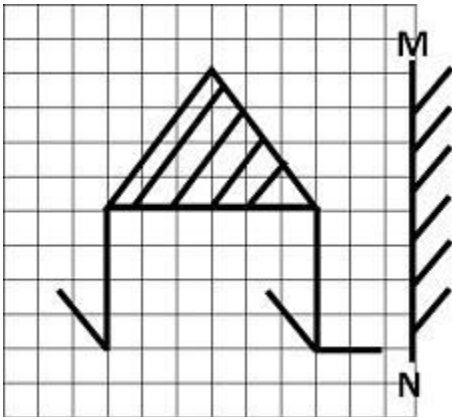
4)



Correct Answer:

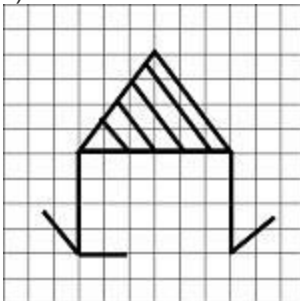


Question 24. If a mirror is placed on the line MN, then which of the answer figures is the right image of the given figure?

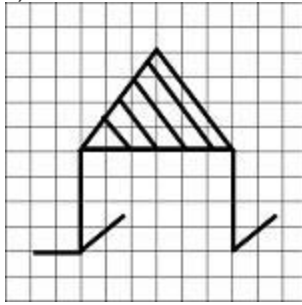


Options:

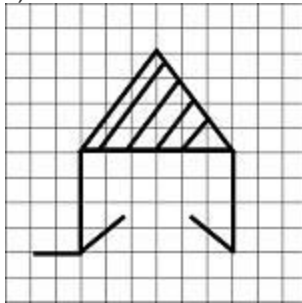
1)



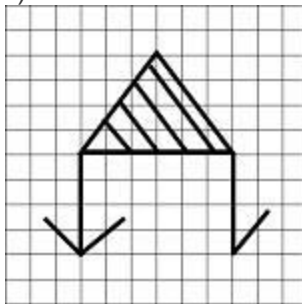
2)



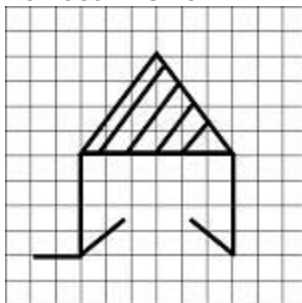
3)



4)



Correct Answer:



**Question 25.**In this question, the sets of numbers given in the alternatives are represented. The columns and rows of Matrix I are numbered from 0 to 4 and that of Matrix II are numbered from 5 to 9. A letter from these matrices can be represented first by its row and next by its column, e.g., D can be represented by 04,12, etc., and 'I' can be represented by 65, 79, etc. Similarly you have to identify the set for the word 'BANK'.

	Matrix-I						Matrix-II					
	0	1	2	3	4			5	6	7	8	9
0	B	N	G	L	D		5	A	I	K	O	R
1	G	L	D	B	N		6	I	K	O	R	A
2	D	B	N	G	L		7	K	O	R	A	I
3	N	G	L	D	B		8	O	R	A	I	K
4	L	D	B	N	G		9	R	A	I	K	O

**Options:**

1) 42,69,14,98

2) 00,55,33,57

3) 21,67,30,86

4) 42,78,43,58

**Correct Answer:** 42,69,14,98