

SSC CGL (Tier - 1) Online Exam Paper - 2016 "held on 2 September 2016" Evening Shift (Reasoning)

EXAM DATE : 2-September-2016

EXAM START TIME : 16:15:00

EXAM NAME : SSC Examination 2016

Question 1. Select the related word/letters/numbers from the given alternatives:

Words : Sentence :: Paragraph: ?

Options:

- 1) TYPING
- 2) Essay
- 3) Letters
- 4) Phrase

Correct Answer: Essay

Question 2. Select the related word/letters/numbers from the given alternatives:

BDCE : GIHJ :: QSRT : ?

Options:

- 1) VWXY
- 2) UWMX
- 3) VXWY
- 4) UWNX

Correct Answer: VXWY

Question 3. Select the related word/letters/numbers from the given alternatives:

9 : 162 :: 8 : ?

Options:

- 1) 96
- 2) 112
- 3) 128
- 4) 160

Correct Answer: 128

Question 4. For the following questions

Find the odd word/letters/number from the given alternatives.

Options:

- 1) Apartment
- 2) Garage
- 3) Quarter
- 4) Flat

Correct Answer: Garage

Question 5. For the following questions

Find the odd word/letters/number from the given alternatives.

Options:

- 1) BDF
- 2) GIK
- 3) LMO
- 4) OQS

Correct Answer: LMO

Question 6. For the following questions

Find the odd word/letters/number pair from the given alternatives.

Options:

- 1) 5-21
- 2) 29-45
- 3) 48-68
- 4) 71-87

Correct Answer: 48-68

Question 7. Arrange the following words as per order in the dictionary

1. Diffident 2. Difficult 3. Different 4. Diffidence

Options:

- 1) 1,2,3,4
- 2) 3,2,4,1
- 3) 2,1,3,4
- 4) 3,2,1,4

Correct Answer: 3,2,4,1

Question 8. A series is given, with one term missing. Choose the correct alternative from the given ones that will complete the series.

ACE, GJI, MQM, ?

Options:

- 1) SXQ
- 2) RWQ
- 3) SUQ
- 4) RXP

Correct Answer: SXQ

Question 9.A series is given, with one term missing. Choose the correct alternative from the given ones that will complete the series.

6,11,21,36,56,?

Options:

- 1) 42
- 2) 51
- 3) 81
- 4) 91

Correct Answer: 81

Question 10.If 4 cats can kill 4 rats in 4 minutes, how many minutes will it take 8 cats to kill 8 rats?

Options:

- 1) 8
- 2) 4
- 3) 2
- 4) 16

Correct Answer: 4

Question 11.If the sum of three consecutive numbers is 15, what is the square of the middle number ?

Options:

- 1) 16
- 2) 25
- 3) 36
- 4) 9

Correct Answer: 25

Question 12.From the given words, select the word which cannot be formed using the letters of the given word.

ILLUSTRIOUS

Options:

- 1) Lust
- 2) Trust

3) Riot

4) Rust

Correct Answer: Trust

Question 13.If $A=1$,

$CAT=60$,

then $MAN=?$

Options:

1) 27

2) 90

3) 180

4) 182

Correct Answer: 182

Question 14.If 'P' means '+', 'Q' means 'x', 'R' means '÷', and 'S' means '-', then $44Q9R12S6Q4P16=?$

Options:

1) 25

2) 36

3) 112

4) 12

Correct Answer: 25

Question 15.If $84+96=4842$,

then $36+78=?$

Options:

1) 3918

2) 3678

3) 3819

4) 1839

Correct Answer: 3918

Question 16.Find the missing number from the given responses:

6	15	20
8	4	5
3	5	20
51	65	?

Options:

- 1) 12
- 2) 51
- 3) 56
- 4) 120

Correct Answer: 120

Question 17. Rajesh walks 2 km to south, then turns north-east, and walks 3 km. Then he turns south and walks 2 kms. Then he turns west and walks 4 kms. Finally, he turns north-west and walks 5 kms. In which direction is he from his starting point?

Options:

- 1) North-west
- 2) North-east
- 3) South-east
- 4) South-west

Correct Answer: North-west

Question 18. One statement is given followed by two conclusions/assumptions, I and II. You have to consider the statement to be true, even if it seems to be at variance from commonly known facts. You are to decide which of the given conclusions/assumptions can definitely be drawn from the given statement.

Statement:

- I) Quality has a price tag.
- II) India is allocating lots of funds to education.

Conclusions:

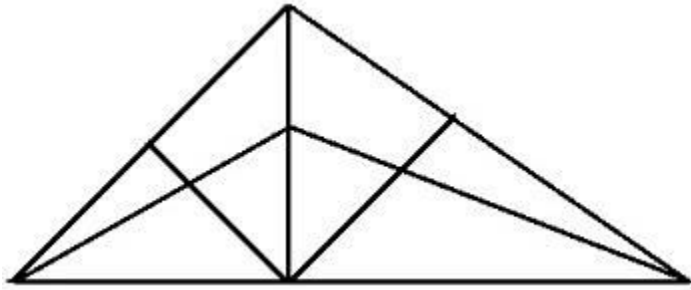
- I) Quality of education in India would improve.
- II) Funding alone can enhance quality of education.

Options:

- 1) Only Conclusion I follows
- 2) Only Conclusion II follows
- 3) Both the Conclusions I and II follow
- 4) Neither Conclusion I nor II follows

Correct Answer: Only Conclusion I follows

Question 19.How many triangles are there in the following figure?



Options:

- 1) 18
- 2) 13
- 3) 9
- 4) 5

Correct Answer: 18

Question 20.Identify the diagram that best represents the relationship among classes given below

Males, Fathers, Engineers

Options:

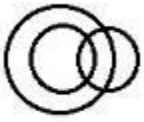
1)



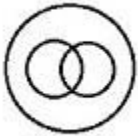
2)



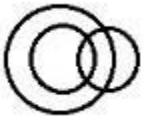
3)



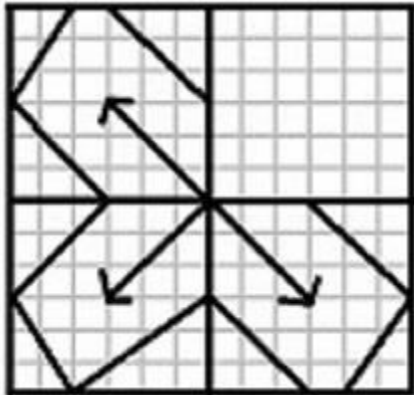
4)



Correct Answer:

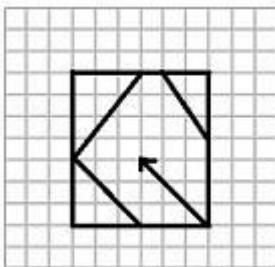


Question 21. Which answer figure will complete the pattern in the question figure?

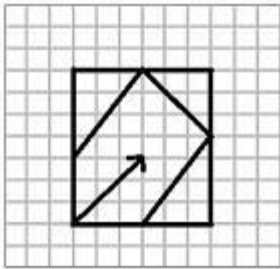


Options:

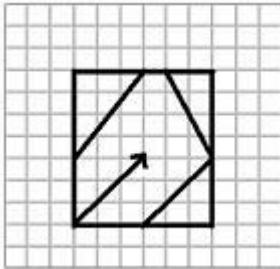
1)



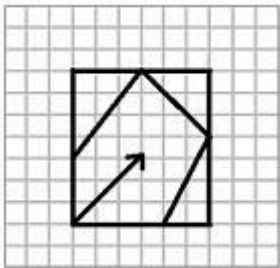
2)



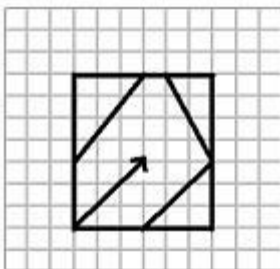
3)



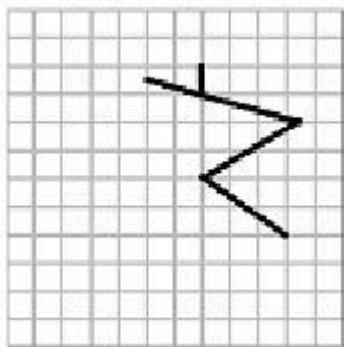
4)



Correct Answer:

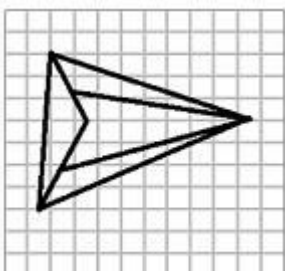


Question 22. From the given answer figures, select the one in which the question figure is hidden/embedded.

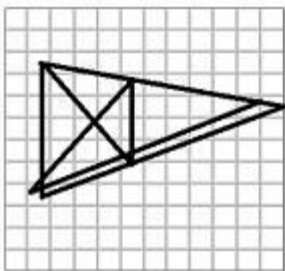


Options:

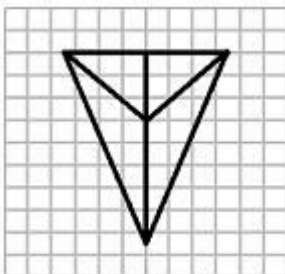
1)



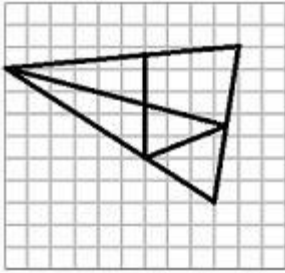
2)



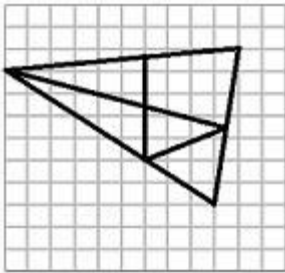
3)



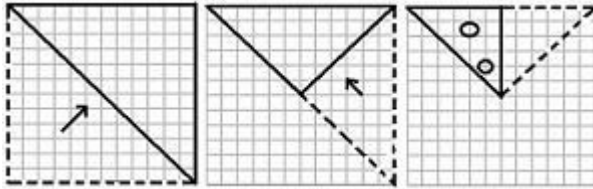
4)



Correct Answer:

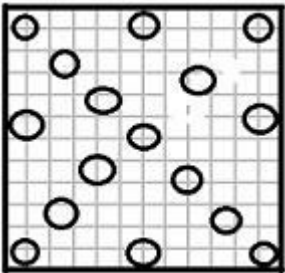


Question 23. A piece of paper is folded and cut as shown below in the question figure. From the given answer figures, indicate how it will appear when opened.

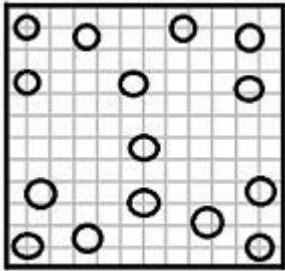


Options:

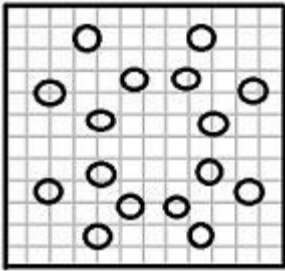
1)



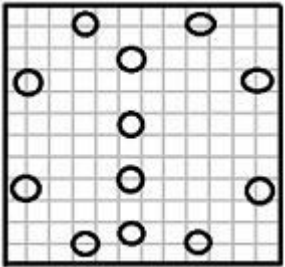
2)



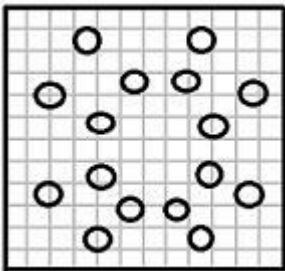
3)



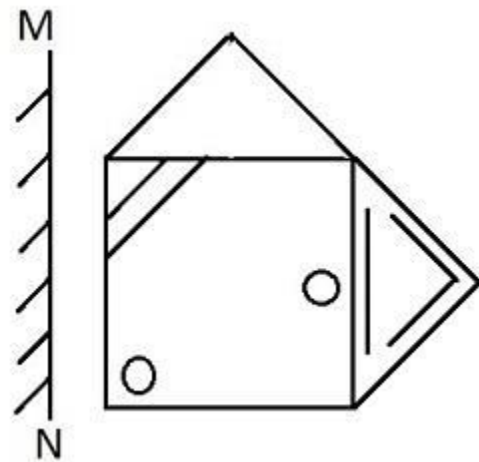
4)



Correct Answer:

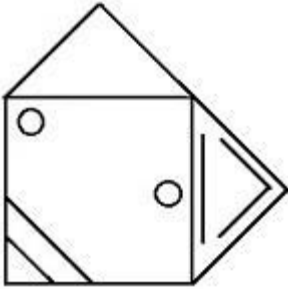


Question 24. If a mirror is placed on the line MN, then which of the answer figures is the right image of the given figure?

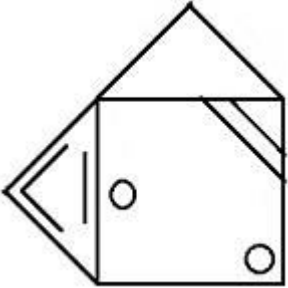


Options:

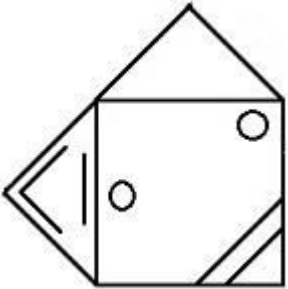
1)



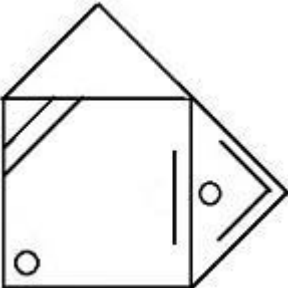
2)



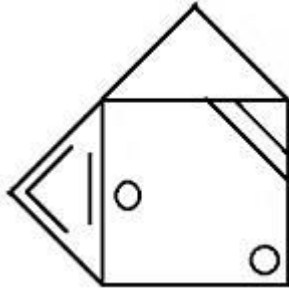
3)



4)



Correct Answer:



Question 25. In this question, the sets of numbers given in the alternatives are represented. The columns and rows of Matrix I are numbered from 0 to 4 and that of Matrix II are numbered from 5 to 9. A letter from these matrices can be represented first by its row and next by its column, e.g., A can be represented by 02, 10, etc., and 'B' can be represented by 57, 65, etc. Similarly you have to identify the set for the word 'FADE'

MATRIX - I

	0	1	2	3	4
0	I	E	A	O	U
1	A	O	U	I	E
2	E	I	O	U	A
3	O	U	E	A	I
4	U	A	I	E	O

MATRIX - II

	5	6	7	8	9
5	F	D	B	G	H
6	B	G	H	F	D
7	D	F	G	H	B
8	G	H	D	B	F
9	H	B	F	G	D

Options:

- 1) 76, 02, 75, 32
- 2) 68, 20, 57, 14
- 3) 55, 33, 65, 23
- 4) 89, 10, 96, 41

Correct Answer: 76, 02, 75, 32