

Question Booklet
Series:

A

MD/MS/PG Diploma Entrance Test – 2014
QUESTION BOOKLET
Paper - II (CLINICAL)

INSTRUCTIONS

Question Booklet
Number: --

610247

Maximum Time Allowed: 2 Hours

No. of Questions: 150
Maximum Marks: 150

Roll Number:

Answer Sheet Number:

Please read the following instructions carefully:

1) **Check the booklet thoroughly:** In case of any defect – Misprint, Missing question(s) or duplication of question(s) / Page(s) get the booklet changed with the booklet of the same series from the Room Invigilator. No complaint shall be entertained after the entrance test.

2) Write your Roll Number and the OMR Answer Sheet Number on the question booklet.

3) Mark carefully your Roll Number, Question Booklet Number, Paper Code, Question Booklet Series and Course on the OMR Answer Sheet and sign at the appropriate place. Incomplete and/or incorrect particulars will result in the non-evaluation of your answer sheet.

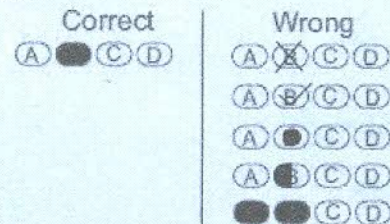
4) Strictly follow the instructions given by the Centre Supervisor / Room Invigilator and those given on the Question Booklet.

5) Candidates are not allowed to carry any papers, notes, books, calculators, cellular phones, scanning devices, pagers etc. to the Examination Hall. Any candidate found using, or in possession of such unauthorized material, indulging in copying or impersonation or adopting unfair means / reporting late / without Admit Card will be debarred from the written test.

6) Please mark the right responses on the OMR Sheet with **ONLY** a Blue/Black ball point pen. Use of eraser, whitener (fluid) and cutting on the OMR Answer Sheet is **NOT** allowed.

7) The test is of objective type containing multiple choice questions (MCQs). Each objective question is followed by four responses. Your task is to choose the correct/best response and mark your response on the OMR Answer Sheet and **NOT** on the Question Booklet.

8) For marking response to a question, completely darken the **CIRCLE** so that the alphabet inside the **CIRCLE** is not visible. Darken only **ONE** circle for each question. If you darken more than one circle, it will be treated as wrong answer. The **CORRECT** and the **WRONG** method of darkening the **CIRCLE** on the OMR Answer Sheet are shown below.



9) Please be careful while marking the response to questions. The response once marked cannot be changed and if done shall be treated as wrong answer.

10) In view of the tight time span, do **NOT** waste your time on a question which you find to be difficult. Attempt easier questions first and come back to the difficult questions later during the test.

11) **DO NOT** make any stray marks anywhere on the OMR Answer Sheet. **DO NOT** fold or wrinkle the OMR answer sheet.

12) Rough work **MUST NOT** be done on the OMR Answer Sheet. Use your test booklet for this purpose.

13) Candidates are provided carbonless OMR Answer Sheet having original copy and candidate's copy. After completing the examination, candidates are directed to fold at perforation on the top of the sheet, tear it to separate original copy and candidate's copy and then hand over the original copy of OMR Answer Sheet to the Room Invigilator and take candidate's copy with them.

DO NOT OPEN THE SEAL OF THIS BOOKLET UNTIL TOLD TO DO SO

1. Radioopaque stones commonly seen in children are
 - (A) Calcium oxalate
 - (B) Xanthine stones
 - (C) Cystine stones
 - (D) Uric acid stones
2. Societal dependency ratio refers to
 - (A) The ratio of 0-14 years age group to the 15-65 age group
 - (B) The ratio of the unemployed youth to the employed adults
 - (C) The ratio of the unemployed children, adults and elderly to the employed people
 - (D) The ratio of 0-14 years and 65 years and above age groups to the 15-64 age group
3. Which of the following is a fibrous joint?
 - (A) Middle radio-ulnar joint
 - (B) Proximal radio-ulnar joint
 - (C) Proximal tibio-fibular joint
 - (D) Sternocostal joints
4. The gastrinoma triangle is bounded by
 - (A) Common bile duct, neck of pancreas and 2nd and 3rd part of duodenum
 - (B) Cystic duct and common bile duct, junction of neck and body of pancreas, and the 2nd and 3rd part of the duodenum
 - (C) Common bile duct, junction of head and neck of pancreas, and the 2nd and 3rd part of the duodenum
 - (D) Cystic duct, neck of pancreas and 2nd part of duodenum
5. Medicolegal action can be initiated against a sonologist for all of the following reasons EXCEPT
 - (A) Misinterpretation of sonologic findings
 - (B) Loss of films
 - (C) Filing of records
 - (D) Not comparing findings with prior findings
6. A 20 year old male presents with seizure and CT scan shows single lesion. Neurocysticercosis was diagnosed. It is acquired by
 - (A) Undercooked pork
 - (B) Raw eggs
 - (C) Unpasteurized milk
 - (D) Contaminated vegetables
7. Which of the following is used in methotrexate 'rescue' regime in invasive mole?
 - (A) Folic acid
 - (B) Folinic acid
 - (C) Vit.B12
 - (D) Niacin
8. All of the following are included in biophysical profile EXCEPT
 - (A) Contraction stress test
 - (B) Amniotic fluid volume
 - (C) Fetal breathing movements
 - (D) Fetal activity
9. Which of the following factors decrease nasal resistance?
 - (A) Infective rhinitis
 - (B) Lying posture
 - (C) Alcohol ingestion
 - (D) Exercise
10. The total serum calcium of a patient is 6mg% with a total protein of 6g% and a serum albumin of 2g%. The corrected serum calcium (mg%) is about:
 - (A) 5.6
 - (B) 6.6
 - (C) 7.6
 - (D) 8.6
11. During mechanical ventilation, mean airway pressure is affected by all EXCEPT
 - (A) Peak inspiratory pressure
 - (B) Positive End Expiratory Pressure (PEEP)
 - (C) Inspiratory time
 - (D) Inspired oxygen concentration
12. The following is true of otosclerosis EXCEPT
 - (A) Otospongiosis is the active form of the disease
 - (B) It is common in places where fluoride levels are high
 - (C) Round window involvement may occur in upto 50% cases
 - (D) It is usually bilateral
13. The major component of ejaculatory fluid is derived from the
 - (A) Testis
 - (B) Prostrate
 - (C) Seminal vesicles
 - (D) Bulbourethral glands

14. Fructose in seminal fluid is obtained from
(A) Testis
(B) Prostrate
(C) Seminal vesicle
(D) Bulbourethral glands
15. In the evaluation of the acute abdomen, the imaging modality that is the cornerstone of assessment is
(A) Ultrasonogram
(B) Plain X-ray
(C) Focussed CT scan
(D) MRI abdomen
16. One of the following is NOT a component of RCH 1 programme:
(A) Child survival
(B) Safe motherhood
(C) Prevention of STDs and RTIs
(D) Introduction of the ASHA worker
17. Features of temporomandibular joint dislocation are all of the following EXCEPT
(A) Trismus
(B) Mouth fixed open
(C) Treatment can be manual reduction
(D) Mandible protrusion
18. Radiographic criteria for lumbar spine instability at L4-L5 are all EXCEPT
(A) Sagittal displacement > 4.5 mm
(B) Sagittal displacement > 15%
(C) Sagittal plane rotation > 45%
(D) Relative sagittal plane angulation > 22 degrees
19. The most common radiographic finding in patients with lateral epicondylitis is
(A) Osteo chondritis dissicans
(B) Coronoid osteophyte
(C) Olecranon osteophyte
(D) Soft tissue calcification at the lateral aspect of the elbow
20. What percentage of Stillbirths at term are due to chromosomal abnormalities?
(A) 25%
(B) 20%
(C) 10%
(D) 1%
21. Double-bubble sign is seen in
(A) Esophageal atresia
(B) Tracheoesophageal fistula
(C) Omphalocele
(D) Duodenal atresia
22. The most common sequel of symptomatic CMV infection in newborn period is
(A) Microcephaly
(B) IUGR
(C) Sensorineural hearing loss
(D) Motor spasticity
23. Thiomersal is an organic mercury-containing preservative that has been in use in vaccines since the 1930s. Fears about its toxicity led to thiomersal being removed from vaccines in many countries. The principal source of human exposure for organic mercury in the world has been
(A) DPT vaccine
(B) Fish
(C) Vitamin supplements
(D) Food grains
24. The commonest site of colorectal carcinoma is
(A) Ascending colon
(B) Transverse colon
(C) Descending colon
(D) Recto-Sigmoid
25. Eighteen hours after acute traumatic occlusion of femoral artery, the patient underwent arterial repair. In the ward it was noticed that the calf on the injured side was tense and extremely tender. The most likely diagnosis is
(A) Undiagnosed distal injury
(B) Revascularization injury
(C) Deep venous thrombosis
(D) Compartment syndrome
26. Which of the following is NOT an absolute indication for mechanical ventilation of a neonate?
(A) Prolonged apnoea
(B) pH 7.22-7.24
(C) PaCO₂ >60mmHg with persistent acidemia
(D) General anaesthesia

27. M. has been on highly-active antiretroviral treatment (Stavudine + Lamivudine + Nevirapine) for 9 months. The CD4 cell count done 1 month ago was 550 cells/5L and plasma viral load was < 50 RNA copies/ml. She now presents with anorexia, nausea, vomiting and weight loss (6 kg) over 3 weeks. Physical examination reveals pulse rate of 120/minute, respiratory rate of 24/minute, blood pressure 120/80 mm Hg and tender hepatomegaly (liver span of 18 cm in the mid-clavicular line). Rest of examination is unremarkable. The most likely diagnosis is
- (A) Mycobacterium avium-intracellulare infection
 - (B) Lactic acidosis
 - (C) Heart failure
 - (D) Drug induced hepatitis
28. Globally, the commonest cancer among males is
- (A) Oral
 - (B) Prostate
 - (C) Colon
 - (D) Lung
29. The causes of acute tubular necrosis include all of the following EXCEPT
- (A) Radiocontrast agents
 - (B) Diuretics
 - (C) Heavy metals
 - (D) Hypoxic ischemic injury
30. Codmans paradox
- (A) Is described for rotations in the shoulder joint
 - (B) Is described in osteosarcomas
 - (C) Is a radiological sign seen in all tumour conditions
 - (D) Is a careful form of pendulum (side-to-side) movement of the upper extremities, followed by immobilization
31. Which among the following is the most appropriate treatment for a pregnant woman (third trimester) with cerebral malaria?
- (A) Artesunate
 - (B) Quinine
 - (C) Chloroquin
 - (D) Mefloquin
32. A positive Murphy's sign is suggestive of
- (A) Acute appendicitis
 - (B) Acute pancreatitis
 - (C) Acute cholecystitis
 - (D) Acute salpingitis
33. A patient with critical illness polyneuropathy is likely to have difficulty with:
- (A) Moving eyes
 - (B) Coughing
 - (C) Smiling
 - (D) Weaning
34. Most common donor site for repair of eye lid trauma with loss of tissue is:
- (A) Subclavicular area
 - (B) Preauricular skin
 - (C) Postauricular skin
 - (D) Contralateral upper eye lid
35. Preiser's disease refers to avascular necrosis of the
- (A) Lunate
 - (B) Navicular
 - (C) Scaphoid
 - (D) Calcaneum
36. A 65-year old male with a 30 pack-year history of cigarette smoking who presents with recurrent cough and hemoptysis. Chest x-ray shows collapsed left lower lung lobe. Which of the following problems is likely to develop in this patient?
- (A) Hyperkalemia
 - (B) Hyponatremia
 - (C) Hypophosphatemia
 - (D) Hyperuricemia
37. The presence of which one of the following indicates viral replication and infectivity in Hepatitis B infection?
- (A) HBsAg
 - (B) HBcAg
 - (C) HBeAg
 - (D) Anti-HBs
38. Net reproductive rate is
- (A) Sum total of age specific reproductive rates
 - (B) Total live births per 1000 married women in reproductive age
 - (C) Number of daughters a newborn girl will bear during her lifetime assuming a fixed age specific fertility and mortality rate
 - (D) Average number of children a woman would have if she went through her reproductive age at the same rate as the age specific fertility rates as the women now in each age group

39. A man was involved in a road traffic accident and brought to the Accident & Emergency department. He was tachypnoeic. On inspiration a segment of his chest wall was sucked into the chest. The diagnosis is
- (A) Rib fracture
 - (B) Tension pneumothorax
 - (C) Hemothorax
 - (D) Flail chest
40. Fusion is the cortical unification of visual objects. It is artificially divided into various types. One of these types of fusion is:
- (A) Sensory
 - (B) Facultative
 - (C) Absolute
 - (D) Obligatory
41. Which of the following factors is related to recurrence after primary anterior shoulder dislocation?
- (A) Treatment with immobilization
 - (B) Treatment with physical therapy
 - (C) Patient gender
 - (D) Patient's age
42. A 33 year old lady presented with symptoms of fluctuant hearing loss, vertigo and tinnitus. Which of the following is UNLIKELY to cause this?
- (A) Vestibular neuronitis
 - (B) Meniere's disease
 - (C) Leutic Labyrinthitis
 - (D) Perilymph fistula
43. Preferred initial treatment for retinopathy of prematurity is
- (A) Cryotherapy
 - (B) Scleral buckling
 - (C) Laser therapy
 - (D) Supplemental oxygen
44. An ocular deviation kept latent by fusional mechanism is:
- (A) Heterophoria
 - (B) Heterotropia
 - (C) Orthophoria
 - (D) Orthotropia
45. A 32-year old female who is being treated for infective endocarditis involving the aortic valve develops an episode of syncope. The heart rate following this is recorded as 36 beats/minute. The most likely diagnosis is
- (A) Perforation of valve cusp
 - (B) Ruptured chordae tendinae
 - (C) Valve ring abscess
 - (D) Acute myocardial infarction
46. Nuclear cataract is often associated with:
- (A) Increase in refractive index of the lens
 - (B) Decrease in refractive index of the lens
 - (C) Decreased spherical aberration
 - (D) Decreased chromatic aberration
47. Acute ischemic ulcer in the leg is seen in young male smokers with
- (A) Buerger's disease
 - (B) Atherosclerotic disease
 - (C) Bazin's disease
 - (D) Trophic ulcer
48. The oesophageal orifice is at vertebral level
- (A) T8
 - (B) T9
 - (C) T10
 - (D) T12
49. Health Adjusted Life Expectancy is based on which of the following?
- (A) Life expectancy at birth adjusted for disability
 - (B) Life expectancy at birth based on current mortality rates
 - (C) Life expectancy adjusted for inability to perform major activities
 - (D) Life expectancy at birth adjusted for life time spent in poor health
50. Baby on ventilator for meconium aspiration syndrome on settings of 24/3X100% @60X0.4. Blood gas shows pH:7.3, PCO2:38, PaO2:60, HCO3:21, ABE:-2. What is the Alveolar to arterial oxygen gradient (AaDO2)?
- (A) 500
 - (B) 700
 - (C) 580
 - (D) 615
51. HLA - B27 belongs to which class of MHC antigens?
- (A) I
 - (B) II
 - (C) III
 - (D) IV
52. Renal vein thrombosis in newborn is associated with all EXCEPT
- (A) Sepsis
 - (B) Dehydration
 - (C) Infant of diabetic mother
 - (D) Umbilical artery catheterization

53. Transtadial transmission is found in which of the following vectors?
(A) Mite
(B) Mosquito
(C) Fleas
(D) Ticks
54. The superior parathyroid glands arise from which branchial pouch?
(A) II
(B) IV
(C) III
(D) V
55. Dairy milk can transmit all of the following diseases EXCEPT
(A) Typhoid
(B) Tuberculosis
(C) Cholera
(D) Polio
56. A patient presents with two hypopigmented anaesthetic patches on the body with one nerve trunk involved. Based on the current WHO definition and recommendation, the patient should receive which of the following treatments?
(A) Single dose of Rifampicin, Ofloxacin and Minocycline
(B) 6 months of Rifampicin and Dapsone
(C) 6 months of Rifampicin, Dapsone and Clofazimine
(D) 12 months of Rifampicin, Dapsone and Clofazimine
57. Long-term domiciliary oxygen therapy has been shown to improve survival in hypoxemic patients with
(A) Bronchiectasis
(B) Chronic obstructive pulmonary disease
(C) Interstitial lung disease
(D) Cystic fibrosis
58. Mr. S was treated with polyvalent anti-venom for a snake bite. He made an uneventful recovery and was discharged. Two weeks later, he presents with fever, polyarthritis and an urticarial skin rash. Which type of immunological reaction causes these manifestations?
(A) Type 1
(B) Type 2
(C) Type 3
(D) Type 4
59. Treatment of a baby with transposition of great vessel include all EXCEPT
(A) Use of PGE1 infusion
(B) Fontan operation
(C) Arterial switch surgery
(D) Rastelli operation
60. Jefferson's fracture is due to
(A) Axial loading
(B) Flexion distraction
(C) Extension
(D) Extension - distraction
61. A 32 year old patient undergoes assessment for suitability for a balloon valvotomy for a tight mitral stenosis. She had class IV symptoms at presentation. The presence of which one of the following features would most likely preclude this form of intervention?
(A) Atrial fibrillation
(B) Dilated left atrium
(C) Heavily calcified mitral valve
(D) Pulmonary hypertension
62. Which one of the following antigens does NOT cause hemolytic disease of the newborn?
(A) Kell
(B) Duffy
(C) E
(D) Lewis antigen
63. The commonest cause of acute small bowel obstruction is
(A) Inflammatory bowel disease
(B) Small bowel carcinoma
(C) Obstructed hernia
(D) Adhesions
64. A dilated pupil which reacts to light shown in the opposite but not to light shown in the same eye, is due to
(A) Argyll-Robertson pupil
(B) Holmes-Adie pupil
(C) Marcus-Gunn pupil
(D) 3rd nerve lesion
65. According to the RNTCP, to detect a sputum smear positive pulmonary tuberculosis, how many sputum sample should be tested?
(A) One
(B) Two
(C) Three
(D) Four

66. Pervasive developmental disorders in childhood include all EXCEPT
- (A) Autism
 - (B) Depression
 - (C) Rett Syndrome
 - (D) Asperger's disorder
67. Commonest cause of cardiac tamponade in a neonate is
- (A) Migrating central line
 - (B) Pneumopericardium
 - (C) GBS pericarditis
 - (D) Hydrops fetalis
68. The following is true of vestibular schwannoma EXCEPT
- (A) It may be produced by a defective chromosome 22q
 - (B) Histelberger's sign may be seen in some cases
 - (C) It is characterized by raised CSF protein levels
 - (D) Giant tumours are more than 3 cm
69. Drug of choice in the acute treatment of supraventricular tachycardia in children is
- (A) IV Adenosine
 - (B) Digoxin
 - (C) Calcium-channel blocker
 - (D) Amiodarone
70. Patient with superior semicircular canal dehiscence syndrome is treated by all of the following EXCEPT
- (A) Avoidance of stimuli that evoke the symptoms and signs
 - (B) Placement of tympanostomy tube
 - (C) Surgical repair of SSC dehiscence
 - (D) Labyrinthectomy
71. The optimum mean arterial blood pressure (mm Hg) to be maintained in a critically ill patient is:
- (A) 55
 - (B) 70
 - (C) 90
 - (D) 100
72. The lower oesophageal sphincter pressure is
- (A) 70 cm of H₂O
 - (B) 25 cm of H₂O
 - (C) 50 cm of H₂O
 - (D) 100 cm of H₂O
73. Which of the following manouver is done to ensure the right direction of pull during forceps delivery?
- (A) Pajots manouver
 - (B) Navjoks manouver
 - (C) Pragues manouver
 - (D) Kristlars maneuver
74. Facial hypertrophy is seen in all the following EXCEPT
- (A) Fibrous dysplasia
 - (B) Klippel-Trenaunay-Weber syndrome
 - (C) Von Recklinghausen's disease
 - (D) Pendred syndrome
75. CMV retinitis
- (A) Was discovered in CMC
 - (B) Is seen in all HIV positive patients
 - (C) Can occur without any Vitreous cells
 - (D) Retinal detachment needs only retinal cryotherapy
76. Erlenmeyer flask deformity is seen in all EXCEPT
- (A) Gaucher's disease
 - (B) Niemann Pick disease
 - (C) Histiocytosis
 - (D) Metaphyseal dysplasia
77. The management of rhabdomyosarcoma of the orbit usually involves:
- (A) Lumbar puncture to rule out central nervous system metastasis
 - (B) Exenteration of the orbit
 - (C) Enucleation and orbital radiation
 - (D) Orbital radiation followed by chemotherapy
78. Hypomagnesemia is frequently associated with which of the following abnormalities?
- (A) Hypocalcemia and hypokalemia
 - (B) Hypercalcemia and hypokalemia
 - (C) Hypocalcemia and hyperkalemia
 - (D) Hyperkalemia and hypercalcemia
79. The advantage of dinoprostone vaginal tablet over PGE₂ gel for induction of labor is
- (A) The tablet is more efficient in inducing labor than the gel
 - (B) There is less uterine hyperstimulation with the tablet
 - (C) The tablet can be removed if hyperstimulation occurs
 - (D) There is less meconium staining of the amniotic fluid with the tablet

80. Which among the following drugs have been shown to reduce the mortality in patients with chronic heart failure?
- (A) Digoxin
 - (B) Frusemide
 - (C) Bisoprolol
 - (D) Amlodipine
81. Anakinra, a drug used to treat Rheumatoid Arthritis is
- (A) Ig-G
 - (B) Ig-M
 - (C) Ig-A
 - (D) Receptor antagonist
82. The NRHM started in 2005 in 18 states in India. One of the following is NOT a component of the NRHM:
- (A) Strengthening the PHC
 - (B) ASHA worker
 - (C) Supply of Indian systems of medicine
 - (D) Promotion of the Pulse Polio Programme
83. The contraceptive effectiveness of combination pills is decreased by interaction with
- (A) Vitamin D
 - (B) Cefazolin
 - (C) Digoxin
 - (D) Phenytoin
84. CA 19-9 is a tumour marker for
- (A) Carcinoma stomach
 - (B) Carcinoma ovary
 - (C) Carcinoma breast
 - (D) Carcinoma pancreas
85. Fluctuating hearing loss in adults is seen in all of the following EXCEPT
- (A) Perilymph fistula
 - (B) Meniere's disease
 - (C) Leutic labyrinthitis
 - (D) Cochlear otosclerosis
86. The following drugs are known to be ototoxic EXCEPT
- (A) Interferon
 - (B) Cisplatin
 - (C) Penicillin
 - (D) Kanamycin
87. General Fertility rate refers to
- (A) The number of live births per 1000 women in the reproductive age in a given year
 - (B) The number of live births per 1000 married women in the reproductive age in a given year
 - (C) The average number of children that would be born to a woman throughout her reproductive span
 - (D) The average number of girl children that would be born to a woman throughout her reproductive span
88. Severe meconium aspiration syndrome is defined as disease requiring
- (A) 40-60% oxygen for 48 hours
 - (B) 60-100% oxygen for 48 hours
 - (C) Mechanical ventilation >48 hours
 - (D) Mechanical ventilation >96 hours
89. When dealing with molar pregnancy, pretreatment serum Beta HCG is useful
- (A) For risk categorization
 - (B) For planning management
 - (C) As baseline for follow up
 - (D) For staging of disease
90. Features of Tolosa Hunt syndrome are all of the following EXCEPT
- (A) Unilateral orbital pain
 - (B) Paralysis of 3rd, 4th and 6th cranial nerves
 - (C) Paraesthesia of the forehead
 - (D) Paralysis of the tongue
91. Low cardiac output is seen in shock due to all of the following EXCEPT:
- (A) Acute myocarditis
 - (B) Pulmonary embolism
 - (C) E coli sepsis
 - (D) Tension pneumothorax
92. Which of the following should be avoided as monotherapy in a patient with pheochromocytoma?
- (A) Prazosin
 - (B) Propranolol
 - (C) Hydralazine
 - (D) Labetalol
93. A patient with severe interscapular pain was diagnosed to have Type B dissection of Aorta on the CT scan. Clinical examination reveals sinus tachycardia of 100/min and blood pressure of 150/84mmHg (similar in both arms). Which one of the following is the most desired intervention?
- (A) Intravenous beta blocker
 - (B) Intravenous GTN (Glyceryl trinitrate)
 - (C) Oral ACE inhibitor
 - (D) Intravenous calcium channel blocker

94. Elements of primary health care includes the following EXCEPT
- (A) Provision of PDS
 - (B) Maternal and child health care
 - (C) Immunization against major infectious diseases
 - (D) Treatment of minor ailments
95. According to NFHS-3 data, in 2003 the IMR in India was 85 per 1000 live births and the under-5 mortality rate was 93 per 1000 live births. Calculate child survival rate.
- (A) 100
 - (B) 93.0
 - (C) 91.5
 - (D) 90.7
96. A 56 year old chronic alcohol consumer presents with shock due to bleeding oesophageal varices. After initial resuscitation, which one of the following is the treatment of choice?
- (A) IV Octreotide
 - (B) IV Terlipressin
 - (C) Endoscopic ligation
 - (D) Endoscopic sclerotherapy
97. Which of the following vaccine is mandatory for international travel to specific parts of the world?
- (A) Polio
 - (B) Measles
 - (C) Small pox
 - (D) Yellow fever
98. Which one of the following features would make a diagnosis of Post Streptococcal Glomerulonephritis (PSGN) unlikely?
- (A) Renal infection with group A beta hemolytic streptococci
 - (B) Proteinuria 5 gm/ 24hours
 - (C) Normal anti streptolysin titres
 - (D) Normal renal function at presentation
99. In the management of an Rh isoimmunized pregnancy, which of the following doppler parameter is used to look for fetal anaemia?
- (A) Peak systolic velocity of MCA
 - (B) S/D ratio of MCA
 - (C) Mean systolic velocity of MCA
 - (D) S/D ratio of umbilical artery
100. 50 year old man presents with increased thirst, polyuria and weight loss. He has a fasting blood glucose of 120mg/dl and a postprandial blood glucose of 210mg/dl. What is your diagnosis?
- (A) Impaired Fasting Glucose
 - (B) Impaired Glucose Tolerance
 - (C) Dysglycemia
 - (D) Diabetes Mellitus
101. Which one of the following is an accurate predictor of gestational age during the first trimester?
- (A) Crown-Rump Length (CRL)
 - (B) Biparietal Diameter (BPD)
 - (C) Fetal Femur Length (FL)
 - (D) CRL+BPD
102. The most common cause of lateral recess stenosis is
- (A) Degenerative changes of inferior articular process
 - (B) Degenerative changes of superior articular process
 - (C) Isthmic spondylolysis
 - (D) Traumatic spondylolisthesis
103. Retinitis pigmentosa signs include all EXCEPT
- (A) Bone spicule pigment clumps at the equator
 - (B) Pale disc
 - (C) Narrow vessels
 - (D) Pigment epithelial detachments
104. Medium vessel vasculitis is seen in
- (A) Henoch Schonlein purpura
 - (B) Churg Strauss syndrome
 - (C) Kawasaki disease
 - (D) Wegners granulomatosis
105. The most accurate sonographic measurement of gestational age is
- (A) Gestational sac
 - (B) Yolk sac
 - (C) Crown rump length
 - (D) Biparietal diameter
106. With every hour of rupture of membranes, the rate of HIV transmission to the baby goes up by
- (A) 16%
 - (B) 12%
 - (C) 6%
 - (D) 2%
107. Coarctation of aorta is most frequently discovered during evaluation for
- (A) Claudication
 - (B) Blue toe syndrome
 - (C) Weight loss
 - (D) Hypertension

108. All the following statements regarding oesophageal diverticulae are true EXCEPT
- (A) Zenker's diverticulum is a pulsion diverticulum
 - (B) Pulsion diverticulae are false diverticulae
 - (C) Most oesophageal diverticulae are false diverticulae
 - (D) They are often secondary to oesophageal motility disorders
109. Stem cells of the cornea are
- (A) In the centre of the cornea
 - (B) Fast dividing cells
 - (C) Seen in the palisades of Vogt
 - (D) Endothelial in origin
110. The vector for Loa loa is
- (A) Culicoides
 - (B) Chrysops flies
 - (C) Simulium flies
 - (D) Anopheles
111. All of the following structures can be imaged in the cul-de-sac EXCEPT
- (A) Bowel
 - (B) Ovary
 - (C) Lymph node
 - (D) Blood
112. After eating a very large Sunday lunch with alcohol, a 42 year old man vomits several times before he complains of severe chest pain. On presentation to the accident and emergency services, he was in shock. His ECG was normal, but his Chest X ray shows some shadowing in the left lower zone. Which one of the following is the diagnosis?
- (A) Esophageal rupture
 - (B) Lower esophageal tear
 - (C) Myocardial infarction
 - (D) Oesophagitis
113. A 65-year old female underwent total hip replacement surgery on the right side. Three days later she develops abrupt onset of breathlessness, pleuritic type of chest pain and hemoptysis. Which of the following tests will confirm the diagnosis of her condition?
- (A) Chest x-ray
 - (B) Echocardiography
 - (C) CT pulmonary angiogram
 - (D) D-dimer
114. The incidence of moderate to severe structural congenital heart disease in liveborn infants is
- (A) 1-2/1000 live births
 - (B) 2-4/1000 live births
 - (C) 10-12/1000 live births
 - (D) 6-8/1000 live births
115. A 24 year old male of poor socio economic status presented with high grade fever for 15 days. One day prior to his presentation in hospital he complained of abdominal distension and severe right lower quadrant abdominal pain. On examination he was toxic and looked unwell. He was dehydrated. Abdominal examination revealed distension and marked tenderness all over the abdomen; tenderness was maximally in the right lower quadrant. The most likely diagnosis is
- (A) Acute cholecystitis
 - (B) Acute appendicitis
 - (C) Typhoid ileal perforation
 - (D) Mesenteric adenitis
116. Which structure acts as the primary stabilizer of the Gleno humeral joint at 90 degrees of abduction and maximum external rotation?
- (A) Supraspinatus
 - (B) Middle Gleno Humeral Ligament
 - (C) Inferior Gleno Humeral Ligament
 - (D) Superior Gleno Humeral Ligament
117. The Yolk Sac is visualized when the size of the gestational sac is
- (A) 5 mm
 - (B) 10 mm
 - (C) 15 mm
 - (D) 20 mm
118. Which of the following is a characteristic of gastro esophageal reflux?
- (A) Anorexia
 - (B) Vomiting
 - (C) Odynophagia
 - (D) Nocturnal cough
119. One TB unit covers a population of
- (A) 30,000
 - (B) 100,000
 - (C) 500,000
 - (D) 1000,000
120. A 60 year old lady has moderately differentiated adenocarcinoma of endometrium involving the outer myometrium. The cervix and adnexae normal are with negative nodes. The stage of disease based on FIGO 2009 is
- (A) Stage IA Grade I
 - (B) Stage IIA Grade I
 - (C) Stage IB Grade II
 - (D) Stage IC Grade II

121. The commonest non-obstetric surgical problem in a pregnant patient is
- (A) Small bowel obstruction
 - (B) Ruptured splenic artery aneurysm
 - (C) Acute appendicitis
 - (D) Acute cholecystitis
122. Which among the following conditions cause acute type 1 respiratory failure?
- (A) Pneumonia
 - (B) Morphine overdose
 - (C) Myasthenia gravis
 - (D) Sleep apnea syndrome
123. Dislocated lenses are associated with which of the following systemic diseases?
- (A) Turner Syndrome
 - (B) Down Syndrome
 - (C) Klinefelter Syndrome
 - (D) Ehlers-Danlos Syndrome
124. A 35 year old lady is found to have moderate dysplasia on routine Pap smear; you will
- (A) Do a colposcopy
 - (B) Take a punch biopsy
 - (C) Repeat pap smear after 3 months
 - (D) Cauterise the cervix
125. The law which has most useful application in evaluating agonist and antagonist muscles in the eye is:
- (A) Hering's law
 - (B) Donder's law
 - (C) Listing's law
 - (D) Sherrington's law
126. Which among the following conditions is an example of hyperchloremic metabolic acidosis?
- (A) Lactic acidosis
 - (B) Diabetic ketoacidosis
 - (C) Renal tubular acidosis
 - (D) Salicylate intoxication
127. The extracellular matrix of cartilage is composed of which type of collagen?
- (A) Type I
 - (B) Type II
 - (C) Type III
 - (D) Type V
128. Hangman's fracture is traumatic spondylolisthesis of
- (A) Atlas
 - (B) Axis
 - (C) Atlantoaxial joint
 - (D) Subaxial spine
129. The most common type of HPV associated with cervical cancer is
- (A) HPV 6
 - (B) HPV 16
 - (C) HPV 23
 - (D) HPV 31
130. Uveitis is present in which category JIA-HLA B27?
- (A) ANA = Negative
 - (B) ANA = Positive
 - (C) RF = Positive
 - (D) HLA B27 = Positive
131. The commonest cause of intestinal obstruction in adults is
- (A) Carcinoma
 - (B) Faecal impaction
 - (C) Gall stones
 - (D) Adhesions
132. 32-year old long-distance truck driver presents with a 20 day history of dry, non-productive cough, progressively worsening breathlessness and fever. On examination, he has an oral temperature of 38.3 degree Celsius, pulse rate of 124/minute and respiratory rate of 32/minute. The oxygen saturation (while breathing room air) is 85%. Extensive oral thrush is present. Auscultation reveals end-inspiratory crackles over both lower lung fields posteriorly. Which among the following is the most appropriate therapy for this patient?
- (A) Amphotericin B
 - (B) Co-trimoxazole
 - (C) Azithromycin
 - (D) Cefotaxime
133. Peptic ulcer on the posterior wall in the first part of the duodenum can bleed. The bleeding is caused by erosion of
- (A) Common hepatic artery
 - (B) Gastroduodenal artery
 - (C) Splenic artery
 - (D) Superior pancreaticoduodenal artery
134. The current National program towards maternal health is
- (A) Safe motherhood and child survival
 - (B) Reproductive and child health
 - (C) Family welfare
 - (D) National Rural Health Mission

135. The dentate line represents the junction between
(A) Rectum and Anal canal
(B) Internal sphincter and External sphincter
(C) Endoderm and Ectoderm
(D) Venous drainage into portal venous system and systemic venous system
136. With Retinoscopy, Hypermetropia
(A) Causes with movement
(B) Causes scissoring of reflex
(C) Causes against movement
(D) Causes on off phenomenon
137. The following are TRUE regarding colonic diverticulosis EXCEPT
(A) Common in the West
(B) Commonly affects sigmoid colon
(C) Saint's triad is seen in 5% of cases
(D) It is a true diverticulum
138. The region most commonly involved in ischemic colitis is:
(A) Rectum
(B) Splenic flexure
(C) Hepatic flexure
(D) Ascending colon
139. Rheumatoid factor is
(A) IgM against IgG
(B) IgG against IgG
(C) IgG against IgM
(D) IgM against IgM
140. Meniscus is predominantly composed of which type of collagen?
(A) Type I
(B) Type II
(C) Type III
(D) Type IV
141. The following Arterial Blood Gas values are seen in a patient with suspected sepsis on an FiO₂ of 0.5: PaO₂ 130 mm Hg; PaCO₂ 35mm Hg; pH 7.20; HCO₃ 14mmol / L; Base Excess -10mol / L. Your diagnosis is:
(A) Metabolic acidosis
(B) Respiratory acidosis
(C) Primary metabolic acidosis with superimposed respiratory alkalosis
(D) Metabolic acidosis with superimposed respiratory acidosis
142. Destructive procedure during pregnancy for a dead baby with hand prolapse is contraindicated if
(A) Patient is a multi
(B) If patient has PIH
(C) The patient has a Bandl's ring
(D) If macrosomia is suspected
143. Ultrasound features suggestive of ovarian malignancy include all of the following EXCEPT
(A) Papillary projections
(B) Unilocular cyst
(C) Thick septae
(D) Low resistance flow
144. Early gastric carcinoma (EGC) is diagnosed based on
(A) The depth of tumour invasion
(B) Lymph nodal status
(C) Submucosal spread
(D) Tumour differentiation
145. The term ranula is applied to
(A) Mucous retention cyst of the submandibular gland
(B) Mucous extravasation cyst of the sublingual gland
(C) Serous extravasation cyst of the sublingual gland
(D) Serous retention cyst of the submandibular gland
146. The diseases associated with rodents are all EXCEPT
(A) Salmonellosis
(B) Malaria
(C) Leptospirosis
(D) Scrub typhus
147. Injury to the spinal accessory nerve causes
(A) Dysphagia
(B) Hoarseness of voice
(C) Dropped shoulder
(D) Speech impairment
148. The most common site for typical Os acromiale is between
(A) Meso and Meta acromion
(B) Pre and Meso acromion
(C) Meta and Basi acromion
(D) Pre and Meta acromion
149. Microcytic hypochromic anaemia is seen in all EXCEPT
(A) Iron deficiency anaemia
(B) Sideroblastic anaemia
(C) Hb E disease
(D) Hereditary spherocytosis

150. Anakinra, a drug used to treat Rheumatoid Arthritis, is effective against
- (A) IL-1
 - (B) IL-2
 - (C) TNF-alpha
 - (D) TNF-beta

Space for Rough Work:

Space for Rough Work:

Space for Rough Work:

