

SSC CGL (Tier - 1) Online Exam Paper - 2016 "held on 3 September 2016" Morning Shift (Reasoning)

EXAM DATE : 3-September-2016

EXAM START TIME : 10:00:00

EXAM NAME : SSC Examination 2016

Question 1. Select the related word/letters/number from the given alternatives.

Cell : Cytology:: Birds: ?

Options:

- 1) Odontology
- 2) Mycology
- 3) Ornithology
- 4) Etymology

Correct Answer: Ornithology

Question 2. Select the related word/letters/number from the given alternatives.

DHLP:WSOK::FJNR: ?

Options:

- 1) UQMI
- 2) TPLH
- 3) SOKG
- 4) VRNJ

Correct Answer: UQMI

Question 3. Select the related word/letters/number from the given alternatives.

2:10::26:?

Options:

- 1) 50
- 2) 36
- 3) 42
- 4) 20

Correct Answer: 50

Question 4. For the following questions

Find the odd word/letters/number pair from the given alternatives.

Options:

- 1) EHJ
- 2) JML
- 3) PSR
- 4) VYX

Correct Answer: EHJ

Question 5. For the following questions

Find the odd word/letters/number pair from the given alternatives.

Options:

- 1) Tomcat
- 2) Baby
- 3) Fawn
- 4) Cub

Correct Answer: Baby

Question 6. For the following questions

Find the odd word/letters/number pair from the given alternatives.

Options:

- 1) 11
- 2) 17
- 3) 19
- 4) 21

Correct Answer: 21

Question 7. Arrange the following words as per order in the dictionary.

1. Patriot 2. Pastor 3. Patron 4. Pattern 5. Pastern

Options:

- 1) 5,2,3,1,4
- 2) 5,2,1,3,4
- 3) 5,2,4,1,3
- 4) 5,2,4,3,1

Correct Answer: 5,2,1,3,4

Question 8. A series is given below with one term missing. Choose the correct alternative from the given ones that will complete the series.

SCD, TEF, UGH, ?, WKL

Options:

- 1) CMN
- 2) VJI
- 3) VIJ
- 4) IJT

Correct Answer: VIJ

Question 9.A series is given below with one term missing. Choose the correct alternative from the given ones that will complete the series.

124, 235, 346, 457, ?

Options:

- 1) 455
- 2) 465
- 3) 565
- 4) 568

Correct Answer: 568

Question 10.F is the brother of A. C is the daughter of A. K is the sister of F, G is the brother of C. Who is the uncle of G?

Options:

- 1) A
- 2) C
- 3) K
- 4) F

Correct Answer: F

Question 11.If Jhansi is 12 ahead in rank of Prabha, who ranks 15th from last, then how many students are there in the class if Jhansi ranks 4th in order of merit ?

Options:

- 1) 23
- 2) 27
- 3) 30
- 4) 31

Correct Answer: 30

Question 12.From the given words, select the word which cannot be formed using the letters of the given word.

ENVIRONMENT

Options:

- 1) ENTER
- 2) METRE
- 3) IRON
- 4) MOMENTUM

Correct Answer: MOMENTUM

Question 13. If 'BASKET' is written as 'TEKSAB' how can 'PILLOW' be written in that code?

Options:

- 1) LOWPIL
- 2) WOLLIP
- 3) LOWLIP
- 4) WOLPIL

Correct Answer: WOLLIP

Question 14. If '+' means '-' and '-' means 'x', 'x' means '÷' and '÷' means '+' then $2 \div 6 \times 6 \div 2 = ?$

Options:

- 1) 1
- 2) 0
- 3) 10
- 4) 5

Correct Answer: 5

Question 15. If $6 \times 9 \times 3 = 963$ and

$$4 \times 8 \times 5 = 845,$$

then $9 \times 4 \times 7 = ?$

Options:

- 1) 974
- 2) 479
- 3) 497
- 4) 749

Correct Answer: 497

Question 16. Select the missing number from the given responses:

3	5	9
4	6	?
3	7	2
36	210	36

Options:

- 1) 4
- 2) 3
- 3) 2
- 4) 1

Correct Answer: 2

Question 17. Ashok went 8 kms south and turned west and walked 3 kms. Again he turned north and walked 5 kms. He took a final turn to east and walked 3 kms. In which direction was Ashok from the starting point?

Options:

- 1) East
- 2) North
- 3) West
- 4) South

Correct Answer: South

Question 18. Consider the given statement/s to be true and decide which of the given conclusions/assumptions can definitely be drawn from the given statement.

Statement: Ahimsa should be basic principle of human beings. All of us should practise Ahimsa.

Conclusions: I. We all know the real meaning of Ahimsa.

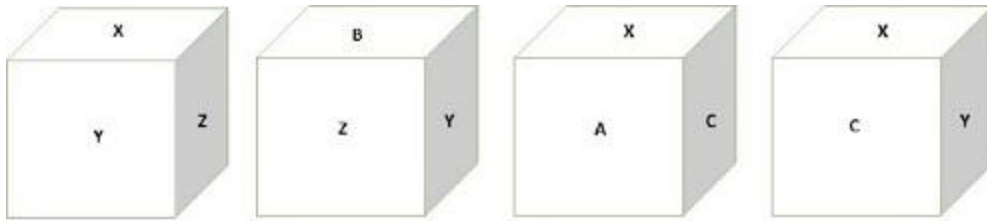
Conclusions: II. Ahimsa promotes global harmony.

Options:

- 1) only conclusion I follows
- 2) only conclusion II follows
- 3) Neither I conclusion nor II follows
- 4) Both conclusion I & II follow

Correct Answer: Neither I conclusion nor II follows

Question 19. Of a cubical container, all the six faces have different markings indicating the position of the equipment packed inside. Which symbol is opposite the face having C?



Options:

- 1) Z
- 2) B
- 3) X
- 4) Y

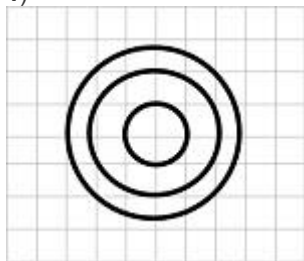
Correct Answer: Z

Question 20. Identify the diagram that best represents the relationship among classes given below

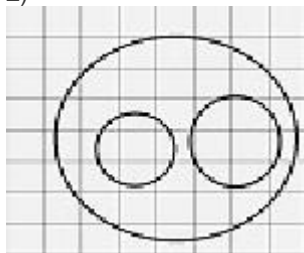
Minutes, Days, Months

Options:

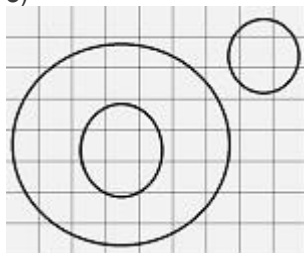
1)



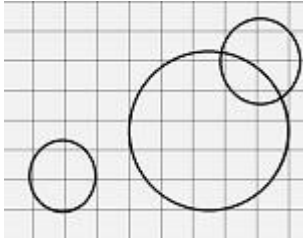
2)



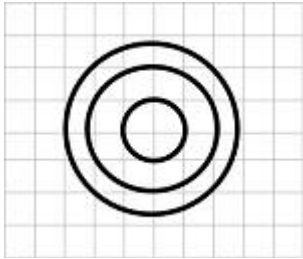
3)



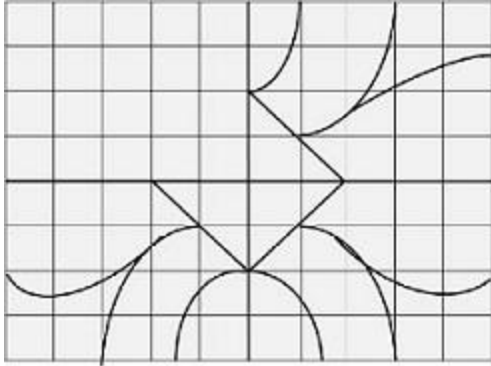
4)



Correct Answer:

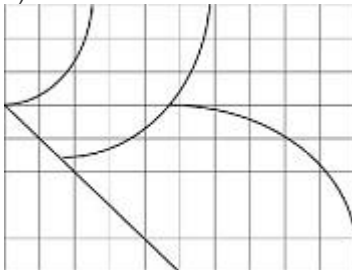


Question 21. Which answer figure will complete the pattern in the question figure?

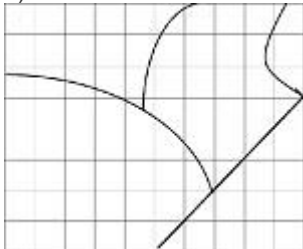


Options:

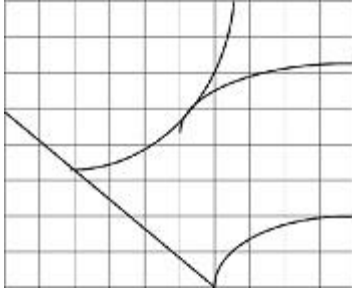
1)



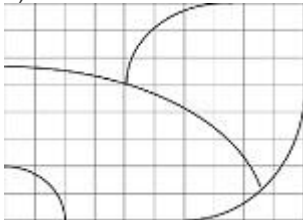
2)



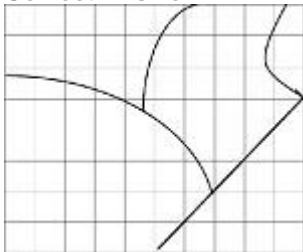
3)



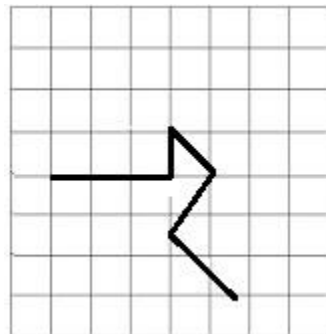
4)



Correct Answer:

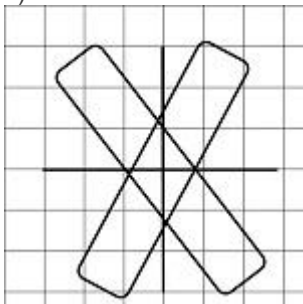


Question 22. From the given answer figures, select the one in which the question figure is hidden/embedded.

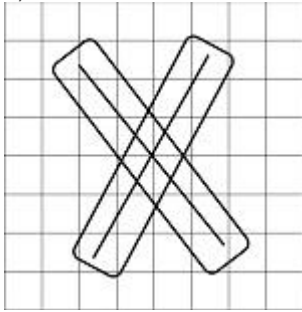


Options:

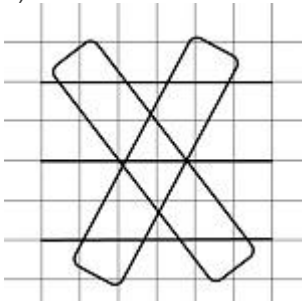
1)



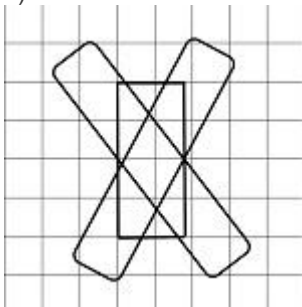
2)



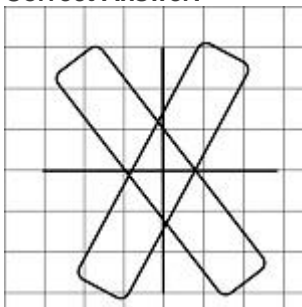
3)



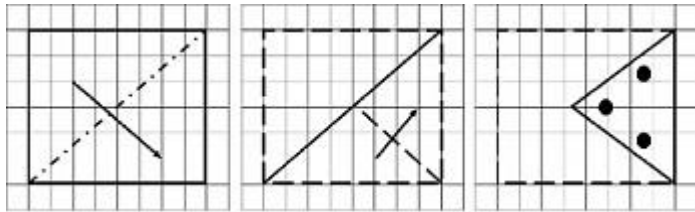
4)



Correct Answer:

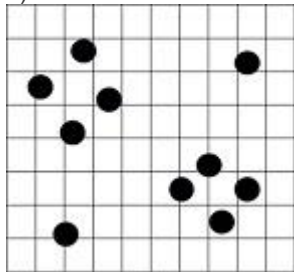


Question 23. A piece of paper is folded and cut as shown below in the question figures. From the given answer figures, indicate how it will appear when opened

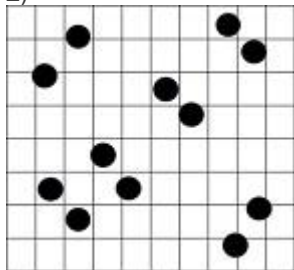


Options:

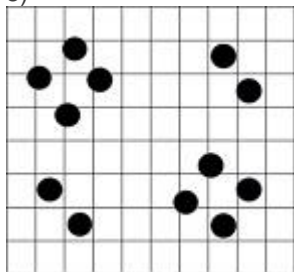
1)



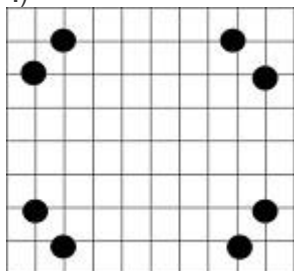
2)



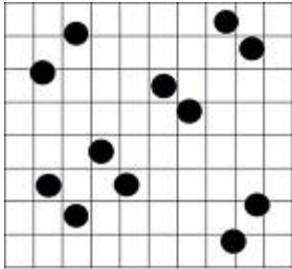
3)



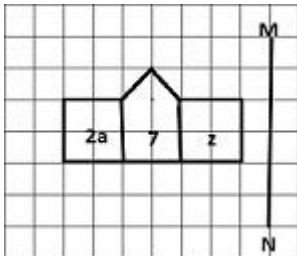
4)



Correct Answer:

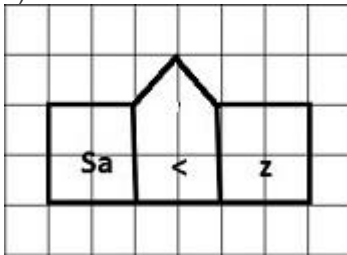


Question 24. If a mirror is placed on the line MN, then which of the answer figures is the right image of the given figure?

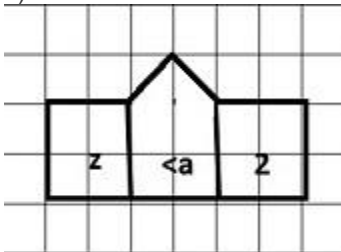


Options:

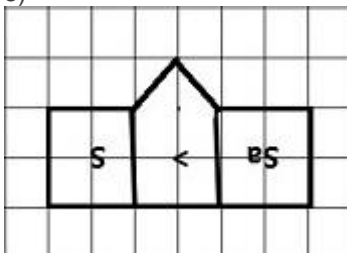
1)



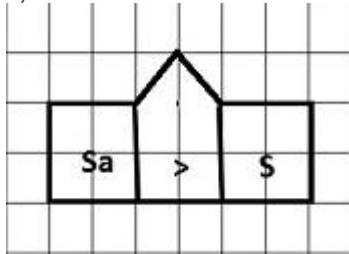
2)



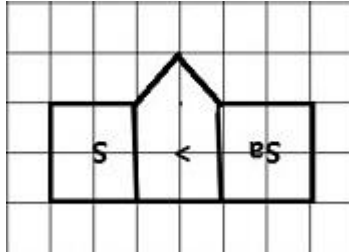
3)



4)



Correct Answer:



Question 25. In the question, a word is represented by only one set of numbers as given in any one of the alternatives. The sets of numbers given in the alternatives are represented by two classes of alphabets as in two matrices given below. The columns and rows of Matrix I are numbered from 0 to 4 and that of Matrix II are numbered from 5 to 9. A letter from these matrices can be represented first by its row and next by its column, e.g., G can be represented by 03, 12, etc., and 'L' can be represented by 57, 65, etc. Similarly you have to identify the set for the word 'DATE'

0	0	1	2	3	4
O	D	T	S	G	N
1	T	S	G	N	D
2	S	G	N	D	T
3	G	N	D	T	S
4	N	D	T	S	G

	5	6	7	8	9
5	A	E	L	K	I
6	L	K	I	A	E
7	K	I	A	E	L
8	E	L	K	I	A
9	I	A	E	L	K

Options:

- 1) 23, 68, 24, 97
- 2) 14, 96, 11, 85
- 3) 23, 96, 40, 85
- 4) 32, 89, 10, 68

Correct Answer: 23, 68, 24, 97